

How to alter a Metastorm Form to a Search Form and populate form fields based on a User Selection

Existing items needed: a pre prepared custom form with fields all connected to variables in a custom Business Object.

New Items needed: Grid (x1), TextField (x1), Custom Form Variables (x2), Business Object (x1), Data Connection (x1).

1. Create DataConnection (x1)

In the ribbon bar click Data Connections and create a new Data Connection to an existing SQL Database. Give it a custom name. Use Windows Authentication. Uncheck DTC. Test connection.

2. Create BusinessObject (x1)

Create a new BusinessObject. Make its connection your new dataconnection name and its type Query.

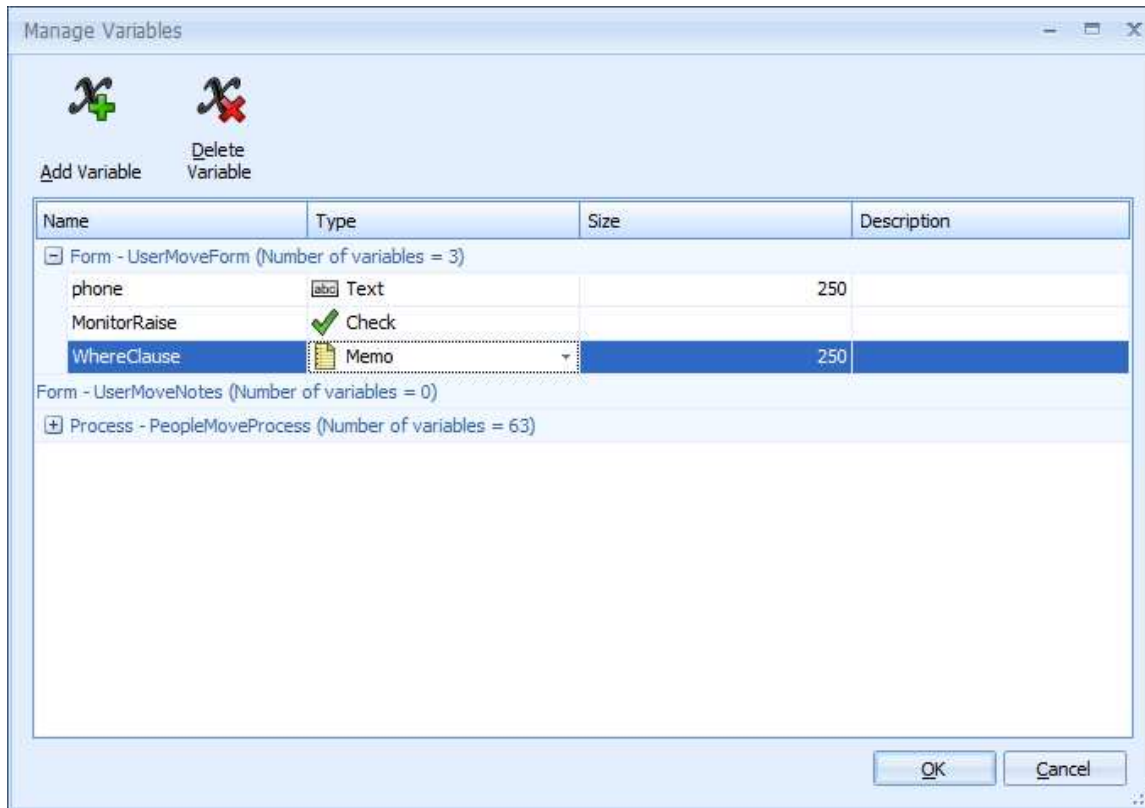
In the Query tab enter your preferred SQL (similar to the below) with a chosen parameter prefixed with @ which will represent your User input Search Text:

```
SELECT [Person_Person_Id] , [Full_Name] FROM vw_Person WHERE First_Name LIKE '%' + @Search + '%' OR Last_Name LIKE '%' + @Search + '%' ORDER BY 'Full Name'
```

Test with a dummy parameter like "a"

3. Create Form Variables (x2)

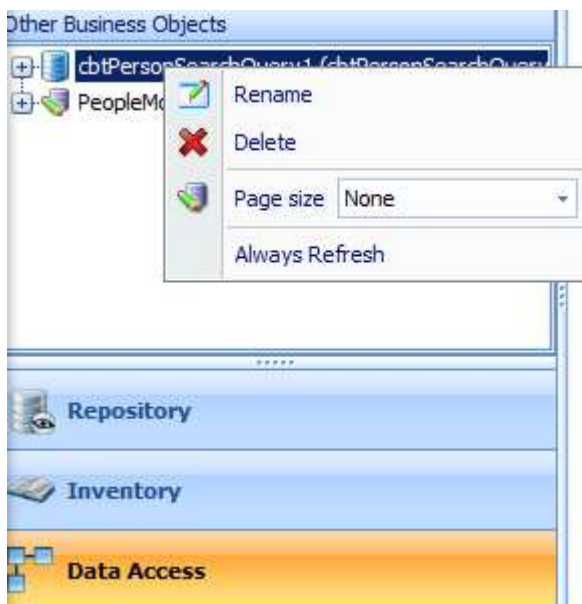
Click Manage Variables in the ribbon bar. Expand your form. Add 2 variables - one 'Search' of type text (for the text box) and size 100 - one called 'WhereClause' of type memo (which will called later in the grid code activity) and leave the default size.



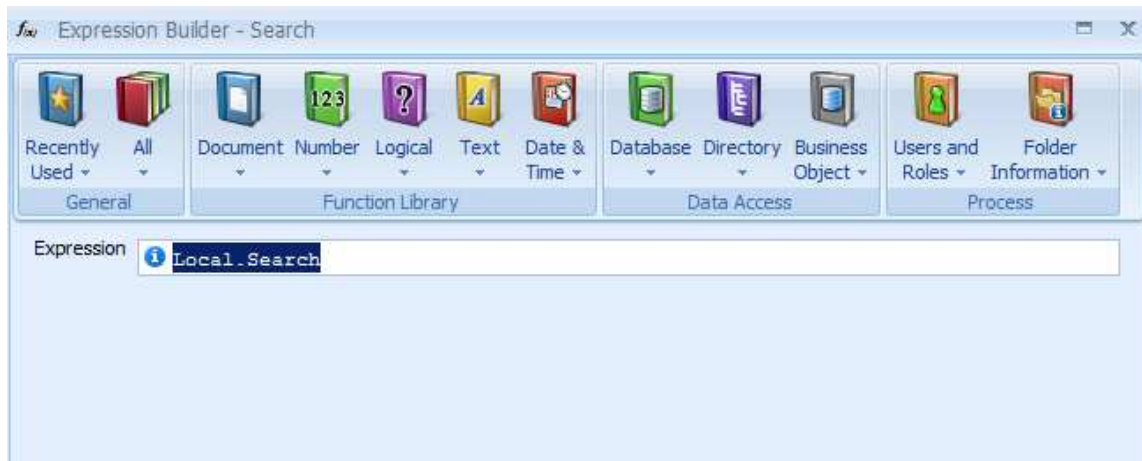
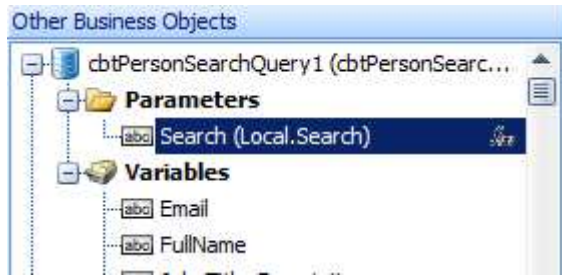
4. Configure Business Object

Bind your Business Object and its properties to Form by selecting the new BO from ToolBox on the left and dragging onto the form.

On the left under DataSources - Other Business Objects you should now see your new BO right click and select Always Refresh. It will now have a tick against it.



Now expand the Business Object - Parameters and click on the function button to the right. From Business Object in the ribbon select your new local Local.Search form variable.



5. Create Text Field (x1)

Create a new textField on the form. Call it something appropriate like txtSearch. In Properties select Variable to be business object and bind it to the Local.Search variable you just created. Click 'Field has dependants of its own' check box.

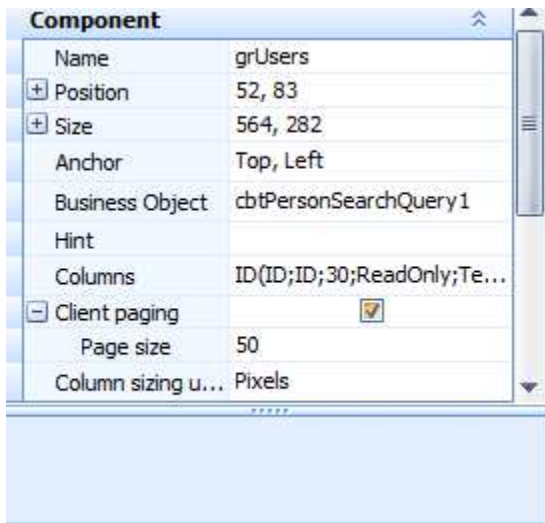
Name	txtSearchName
Caption	Search By First or Last Na...
Position	52, 57
Width	156
Anchor	Top, Left
Caption alignm...	Top
Field Alignment	Align Left
Variable	Business Object
Business Ob...	Local.Search
Maximum length	100

Business Object Item

6. Create Grid (x1)

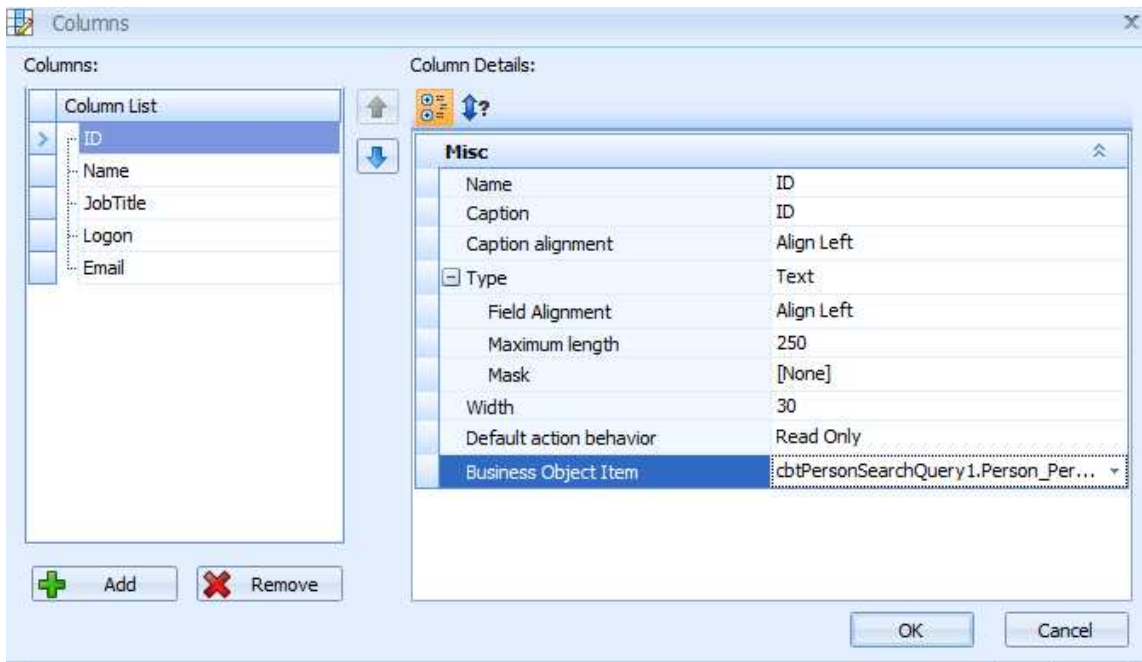
Create a Grid on the form. Call it something appropriate like grdUsers. Go to Properties and click Business Object - select your new BO. Click 'Field Has Dependants of its own' and 'Field is Dependant on

other' check box.



Click Columns. Click Add. Add the Various Items (with Headers and widths) from the BO you wish to display in the Grid. Remember to bind each to your relevant Business Object Item.

In this example Add ID First as it becomes easier to reference in the Grid - code activity.



7. Create Activities on Grid to populate existing Form Fields

In the Properties of the Grid click When User Selects Event button.

From Toolbox on the left select Execute Code (x1) and drag it onto the main map. Rename to Assign WhereClause to GridRowSelectedItem

Double click. In the code editor copy and paste the following:

```
Local.WhereClause = ProcessContext.UserInput[0].ToString();
```

// 0 within the UserInput (iList) object refers to the first column in the datagrid in this case id. ProcessContext is equivalent of This keyword.

From Toolbox on the left select Assign Variable and drag it onto the main map below the Assign WhereClause item. Rename it Assign Job Title.

Double click. In expression builder on the left select the form BO item that you wish to populate e.g. PeopleMovesPtypeData.JobTitle. On the right enter the following sql to reference from the DataConnection to your database

```
SelectSql(new LocalConnection (), "SELECT Job_Title_Description FROM vw_Person WHERE Person_Person_Id =" + Local.WHERESTATMENT)
```

Repeat above step picking various assign Variable and amend SQL and Business Object variable accordingly to the form field.

8. Amend existing Form Fields

Select an existing field on the form you've chosen to populate and click properties on the left. Click 'Field is Dependant on other' check box.